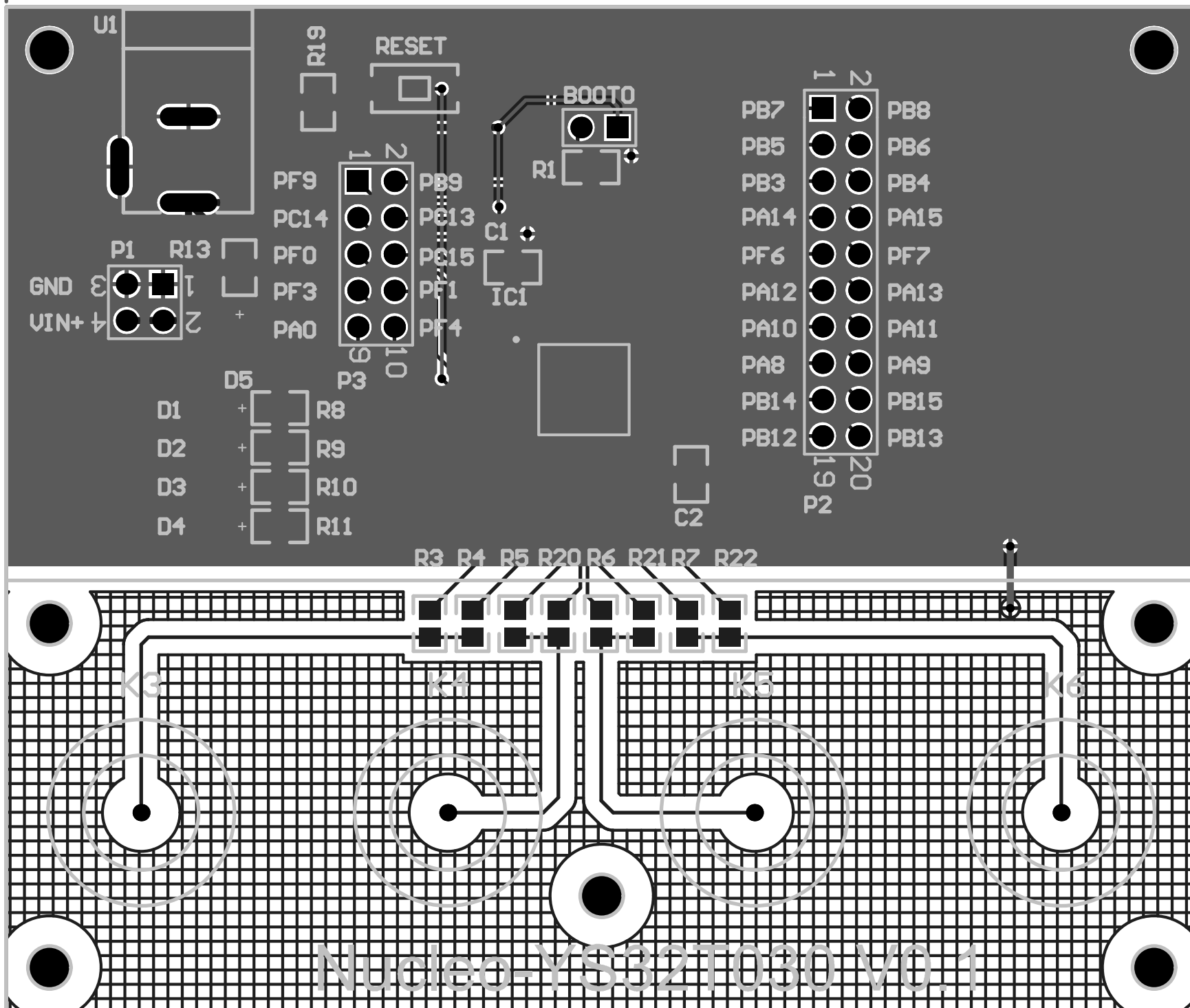




83.00

70.00



| Comment | Description | Designator | Footprint | LibRef | Quantity |
|----------------|-----------------------------|-----------------------------------|-----------------------|---------------|----------|
| PZ254V-11-02P | Header, 2-Pin | BOOT0 | HDR1X2 | Header 2 | 1 |
| 0.1uF/50V/0805 | | C1, C2 | 0805 | C0805 | 2 |
| NCD0603C1 | LED 2mA 红色 | D1, D2, D3, D4 | TLMO1000 | TLMS1000-GS08 | 4 |
| NCD0603R1 | LED 2mA 红色 | D5 | TLMO1000 | TLMS1000-GS08 | 1 |
| YSM002-48PIN | YSM002-48PIN | IC1 | QFP50P900X900X160-48N | YSM002-48PIN | 1 |
| F10-23-6-0.4 | 弹簧触摸键 | K3, K4, K5, K6 | TOUCH-弹簧 | TOUCH-弹簧 | 4 |
| PZ254V-12-4P | Header, 2-Pin, Dual row | P1 | HDR2X2 | Header 2X2 | 1 |
| PZ254V-12-20P | Header, 10-Pin, Dual row | P2 | HDR2X10 | Header 10X2 | 1 |
| PZ254V-12-10P | Header, 5-Pin, Dual row | P3 | HDR2X5 | Header 5X2 | 1 |
| 4.7K/F/0805 | | R1, R8, R9, R10, R11, R13, R19 | 0805 | R0805 | 7 |
| 1K/F/0805 | | R3, R5, R6, R7 | 0805 | R0805 | 4 |
| NC/1K/F/0805 | | R4, R20, R21, R22 | 0805 | R0805 | 4 |
| TS-1101-C-W | | RESET | 轻触开关-小型 | 轻触开关-小型 | 1 |
| DC-005 2.0 | | U1 | 电源端子-2-6.4 | 电源端子 | 1 |